

DMX2

Wiring and Software Guide

DMX2 Wiring Overview

Position #4 DMX Termination

Power Indicator

DMX Status

36V IN

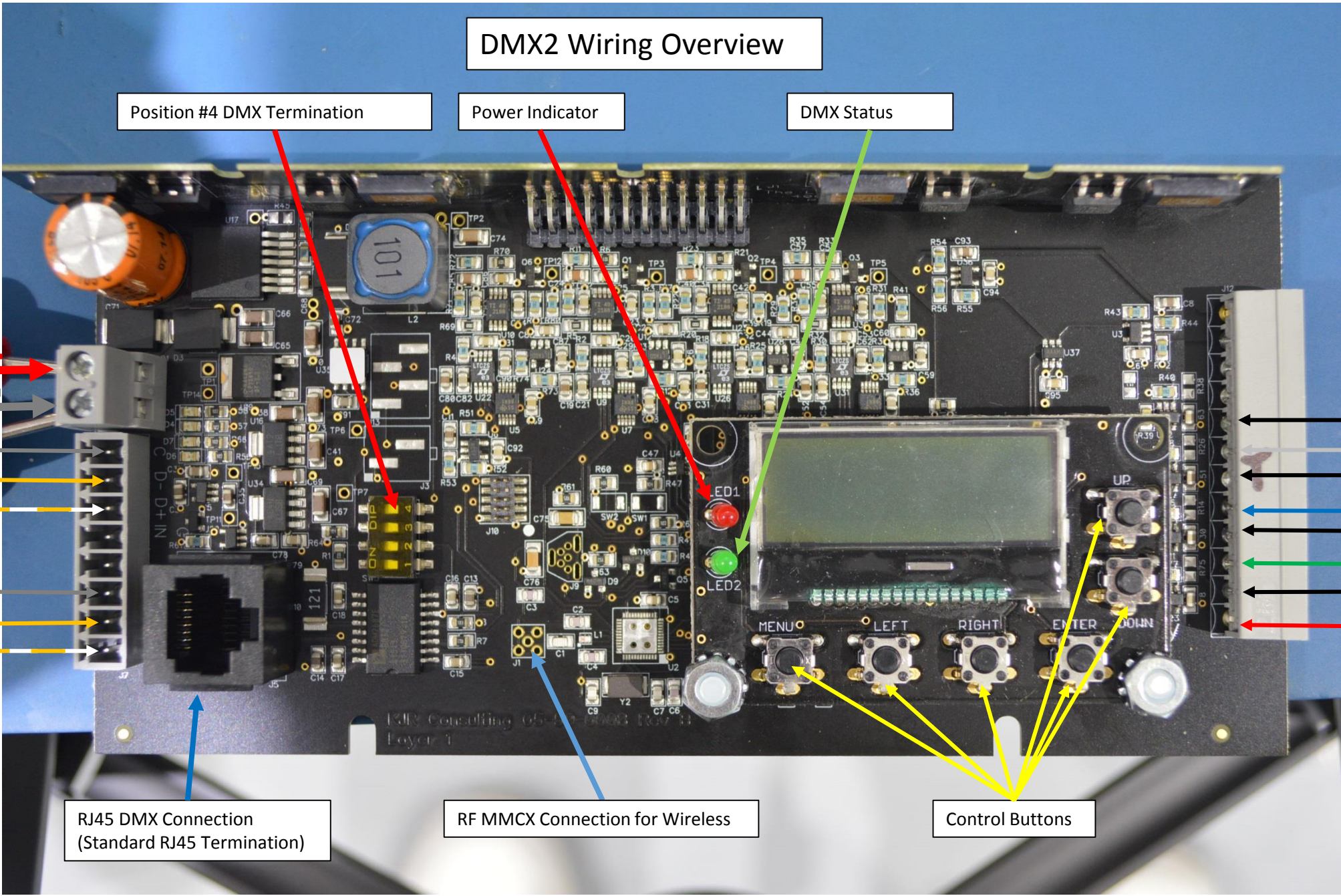
- Hardwire DMX Connections
- DMX IN Com
 - DMX IN -
 - DMX IN +
 - DMX TH Com
 - DMX TH -
 - DMX TH +

RJ45 DMX Connection
(Standard RJ45 Termination)

RF MMCX Connection for Wireless

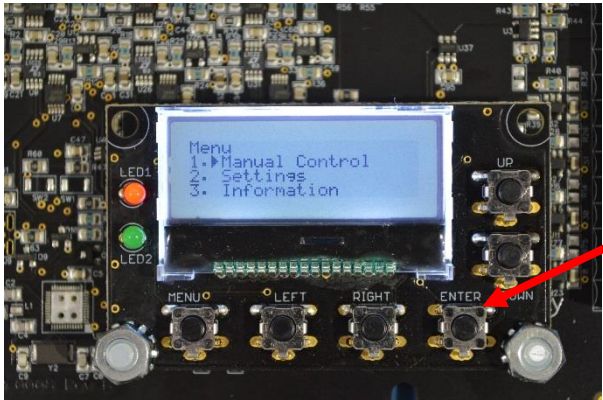
Control Buttons

Output to LED



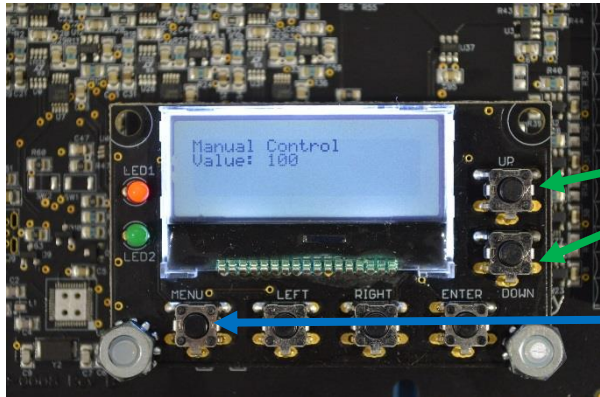
DMX2 Software Overview

Main Menu



Press enter to Access the Manual Control screen.

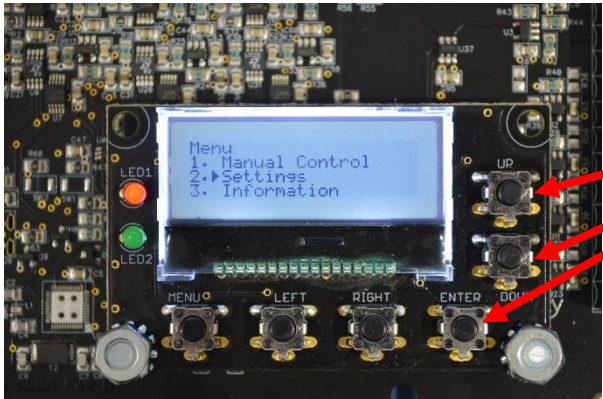
Manual Control Menu



Adjust the intensity of white only by using the up and down control buttons.

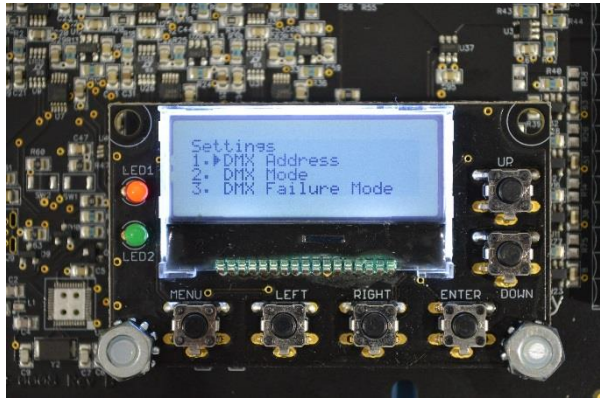
When finished press the menu control button to return to the main menu.

Main Menu

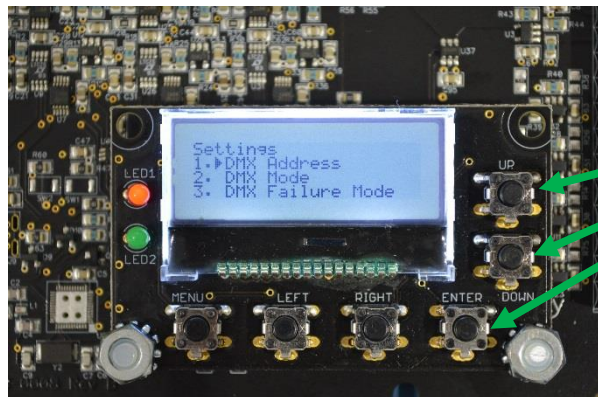


Use the up and down control buttons and enter to select the Settings menu.

Settings Menu

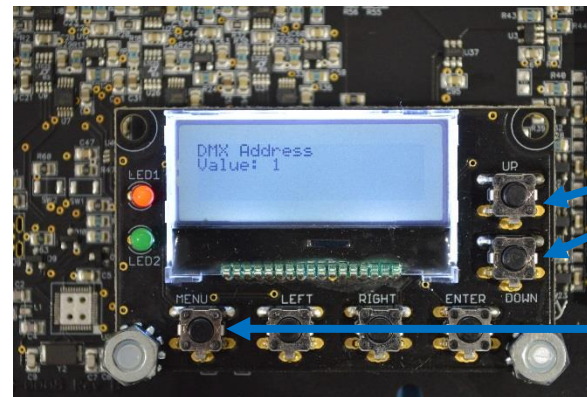


Settings Menu



Use the up and down control buttons and enter to select the DMX Address menu.

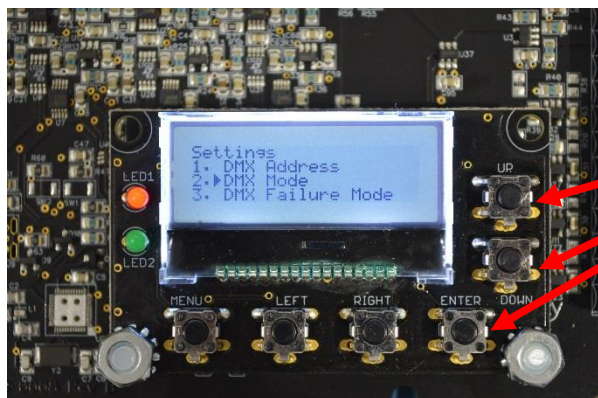
DMX Address Menu



Use the up and down control buttons to select the DMX address.

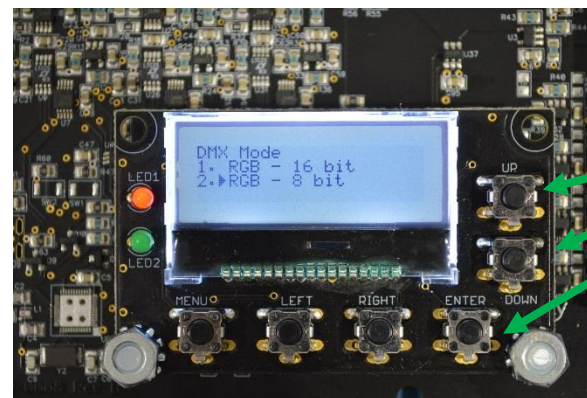
When finished press the menu control button to return to the Settings menu.

Settings Menu



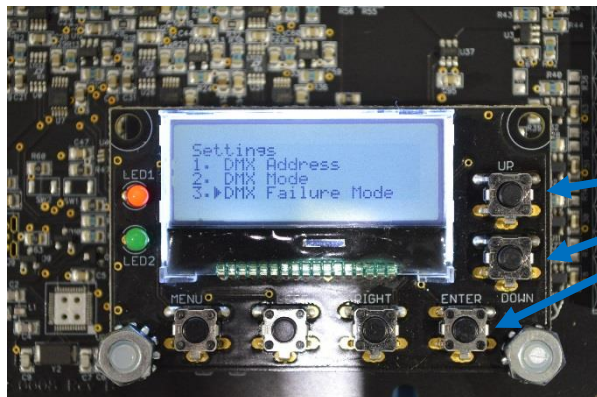
Use the up and down control buttons and enter to select the DMX Mode menu.

DMX Mode Menu



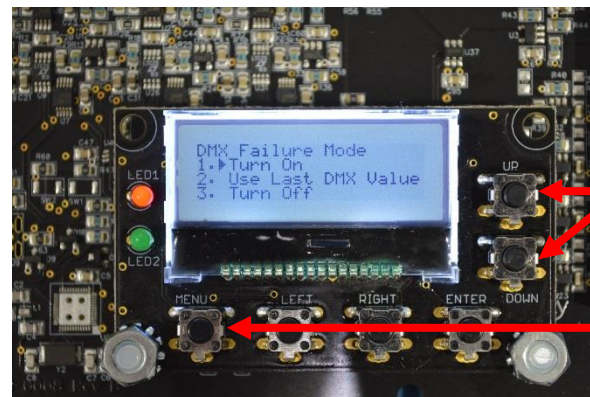
Use the up and down control buttons to select the DMX mode.

Settings Menu



Use the up and down control buttons and enter to select the DMX Failure Mode menu.

DMX Failure Mode Menu

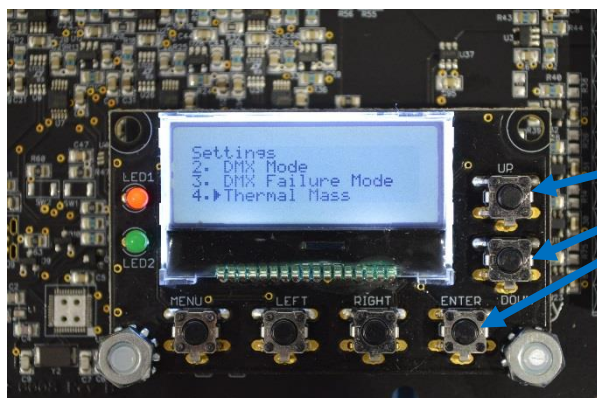


Use the up and down control buttons to select which failure mode you desire.

1. Turn on – white only when DMX is lost.
2. Use last DMX Value when DMX is lost.
3. Turn off when DMX is lost.

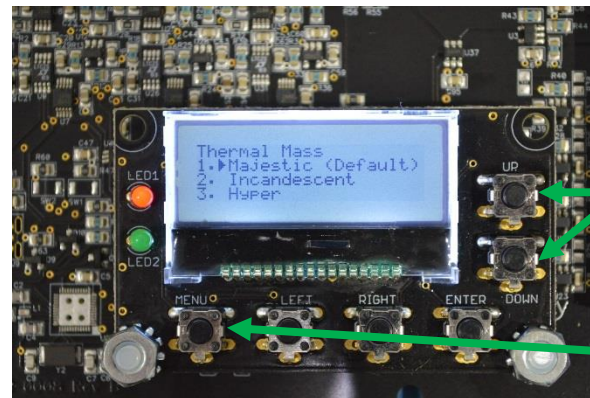
When finished press the menu control button to return to the settings menu.

Settings Menu



Use the up and down control buttons and enter to select the Thermal Mass menu.

Thermal Mass Menu

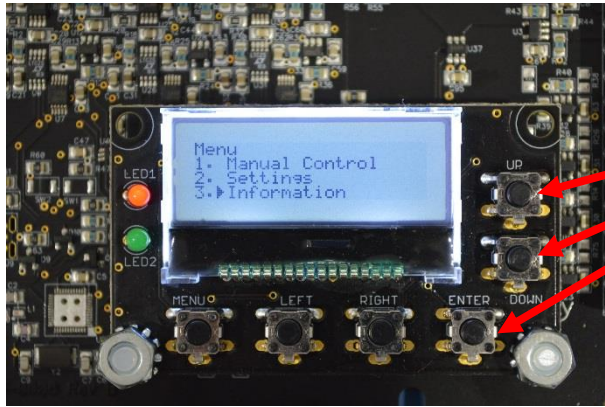


Use the up and down control buttons to select which Thermal Mass you desire.

1. Majestic replicates the dimming response of a 2000w halogen bulb.
2. Incandescent replicates the dimming response of a 500w halogen bulb.
3. Hyper replicate the dimming response of a 25w halogen bulb.

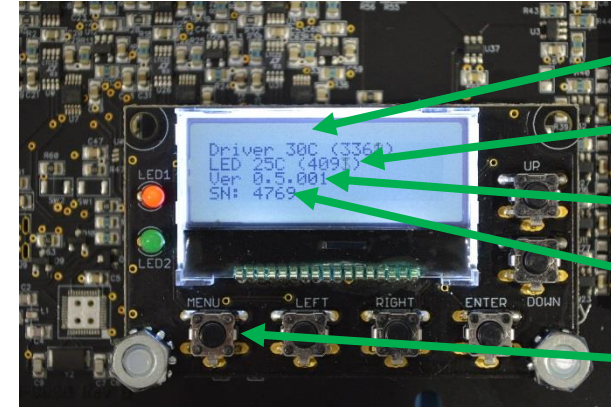
When finished press the menu control button to return to the settings menu.

Main Menu



Use the up and down control buttons and enter to select the Information menu.

Information Menu



Driver Temperature

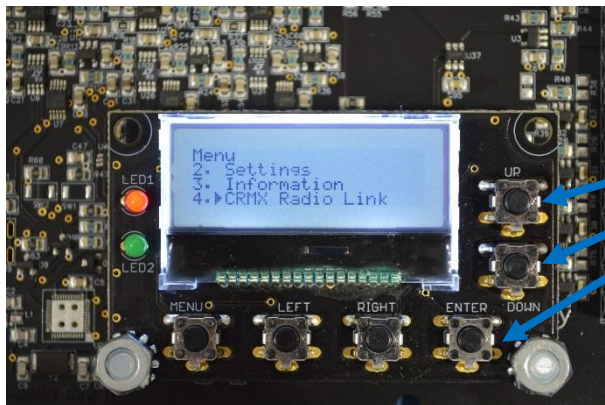
LED Temperature

Software Version

Software Serial #

When finished press the menu control button to return to the main menu.

Main Menu



Use the up and down control buttons and enter to select the CRMX Radio Link menu.

CRMX Radio Link Menu



If you purchased the Lumen Radio Wireless option this is where it can be linked and unlinked.