

USER AND INSTALLATION MANUAL

MAG:CFX<sup>®</sup>

ENGLISH

# /SMOKEJET.<sup>®</sup>



CE SMOKE FX

PART01085  
rev 01-02



## DISCLAIMER

---

### **⚠ WARNING**

Read this manual carefully before installing and/or using this product. Failure to read the manual and to follow the printed instructions may lead to personal injury and/or damage to the product.

---

© 2019 MAGICFX®  
All rights reserved.

Nothing from this publication may be copied, reproduced and/or published by means of printing, photocopying or by any other means, without the prior written approval of MAGIC FX.

MAGIC FX reserves the right to modify specifications stated in this manual.

## TRADEMARKS

Any brand names mentioned in this manual are registered trademarks of their respective owners.

## LIABILITY

MAGIC FX accepts no liability for claims from third parties arising from unauthorised use, use other than that stated in this manual, and use other than in accordance with the General Conditions registered at the Chamber of Commerce.

We further refer to the General Conditions. These are available on request, free of charge.

Although considerable care has been taken to ensure a correct and comprehensive description of all relevant components, the manual may nonetheless contain errors and inaccuracies.

Should you detect any errors or inaccuracies in the manual, we would be grateful if you would inform us. This helps us to further improve our documentation.

# TABLE OF CONTENTS

Disclaimer	2
Trademarks	2
Liability	2
Foreword	4
Language	4
Revision table	4
<b>1 Safety information</b>	<b>5</b>
<b>1.1 Main parts</b>	<b>6</b>
<b>1.2 Technical data</b>	<b>6</b>
<b>1.3 Product identification</b>	<b>7</b>
<b>1.4 Accessories</b>	<b>7</b>
<b>1.5 FX fluids</b>	<b>7</b>
<b>2 Operate safely!</b>	<b>8</b>
<b>2.1 General safety rules</b>	<b>8</b>
<b>2.2 Rigging</b>	<b>9</b>
<b>2.3 Safety symbols</b>	<b>9</b>
<b>2.4 Precautions for operation</b>	<b>9</b>
<b>3 Setting up</b>	<b>10</b>
<b>3.1 Install the machine.</b>	<b>10</b>
<b>4 Operation</b>	<b>11</b>
<b>4.1 Control panel operation.</b>	<b>11</b>
<b>4.2 Control menu.</b>	<b>11</b>
<b>4.3 Wireless operation.</b>	<b>13</b>
<b>4.4 Registering transmitter.</b>	<b>13</b>
<b>4.5 Transmitter battery replacement.</b>	<b>14</b>
<b>4.6 DMX connector pin assignment</b>	<b>14</b>
<b>4.7 DMX channel function.</b>	<b>15</b>
<b>5 Clean up</b>	<b>16</b>
<b>6 Maintenance</b>	<b>16</b>
<b>7 Troubleshooting</b>	<b>17</b>
<b>8 Correct disposal</b>	<b>18</b>
<b>9 Ec declaration of conformity</b>	<b>19</b>

## FOREWORD

Congratulations! You have bought a great new product from MAGIC FX.

This manual contains all information required for the intended use of the equipment. Deviation from the described intended use can result in a hazardous situation and/or property damage.

This manual includes notes and warnings on safe operation of the equipment. These notes and warnings are accompanied by the following icons. Read them attentively!

---

**⚠ DANGER**

Indicates a hazardous situation that, if not avoided, will result in death or serious injury. This signal word is to be limited to the most extreme situations.

---

---

**⚠ WARNING**

Indicates a hazardous situation that, if not avoided, could result in death or serious injury.

---

---

**⚠ CAUTION**

Indicates a hazardous situation that, if not avoided, could result in minor or moderate injury.

---

---

**NOTICE**

Indicates information considered important, but not hazard-related (e.g. messages relating to property damage).

---

## LANGUAGE

This document contains the original instructions in English. In case you require other languages please contact MAGIC FX.

## REVISION TABLE

Doc nr	Revision	Date	Description	Author	Approved
PART01085	01-00	20-08-2018	Initial release	TVA	WH
PART01085	01-02	04-01-2021	New design	NE	LL

# 1 SAFETY INFORMATION

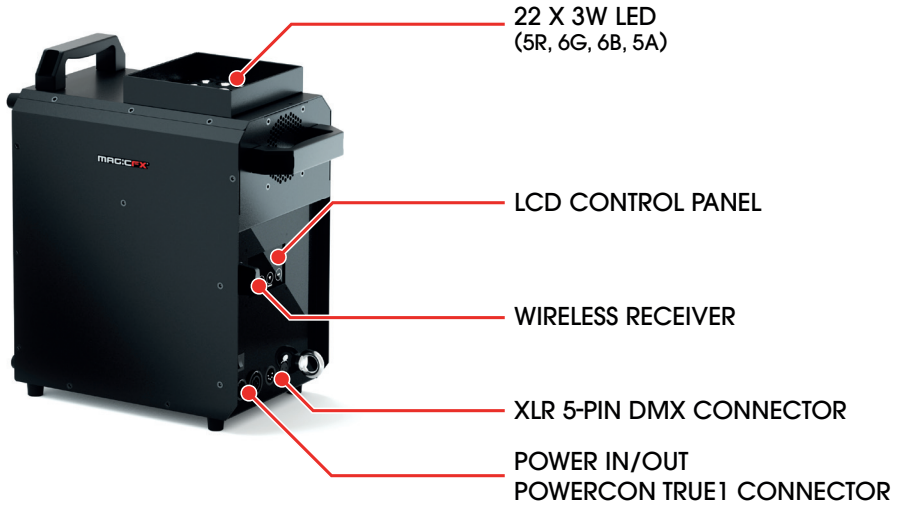
## **⚠ WARNING**

Please read the following safety information carefully before operating the machine. Information includes important safety information about installation, usage, and maintenance. Pay attention to all warning labels and instructions in this manual and printed on the machine.

If you have questions about how to operate the machine safely, please contact your local MAGIC FX dealer for help.

- Keep this device dry.
- Always connect to a grounded circuit to avoid risk of electrocution.
- Before connecting machine to power, always check voltage indicate on machine match to your local AC voltage. Do not use the machine if AC power voltage does not match.
- Disconnect the machine from AC power before servicing and when not in use.
- This product is for indoor use only! Do not expose to rain or moisture. If fluid is spilled, disconnect AC power and clean with a damp cloth. If fluid is spilled onto electronic parts, immediately unplug the machine and contact your local MAGIC FX dealer for advice.
- No user serviceable and modifiable parts inside. Never try to repair this product, unauthorized technician may lead machine to damage or malfunction.
- For adult use only. Never leave the machine running unattended.
- Installed in well ventilated area. Provide at least 50 cm space around the machine.
- Never add flammable liquid of any kind to the machine.
- Make sure there are no flammable materials close to the machine while operating.
- Only use MAGIC FX fluid. Other fluid may lead to heater clog and malfunction.
- If the machine fails to work, unplug the machine and stop operation immediately. Contact your local MAGIC FX dealer for advise.
- Before transporting the machine, make sure the fluid tank is completely drained.
- Smoke fluid may present health risks if swallowed. Do not drink smoke fluid. Store it securely. In case of eye contact or if fluid is swallowed immediately look for medical advice.

## 1.1 MAIN PARTS



## 1.2 TECHNICAL DATA

<b>Product</b>	Product Name	MAGICFX® SMOKEJET		
	Product Code	MFX0901		
	Product Type	SMOKE FX		
<b>Main Dimensions</b>	Length	345 mm	13.6 in	
	Width	193 mm	7.6 in	
	Height	386 mm	15.2 in	
<b>Weight</b>	Weight	11.1 kg (dry)	13.6 kg (full)	24.5 lb / 30 lb
<b>Electrical</b>	Voltage Input	230 - 250 Vac		
	Voltage Frequency	50 - 60 Hz		
	Power Consumption	1420 W		
	Power Connector	Neutrik® powerCON TRUE1 (in & out)		
<b>Usage</b>	Consumable(s)	MAGICFX® SMOKEJET fluid		
	Consumable Consumption	MAGICFX® SMOKEJET fluid 2.5 ml/s		

Technical data

### 1.3 PRODUCT IDENTIFICATION

**MAGIC:CFX®** Build date: 2101  
MFX0901 - SMOKEJET Serial: 00000  
Weight: 11.1kg / 24.5lb.  
Power: 230Vac 50-60Hz 1420W  
Breaker: 9A 250V



MAGIC FX B.V. Schouwrooij 27 5281RE Boxtel The Netherlands

Type plate

### 1.4 ACCESSORIES

Code	Product	Included
PART01157	REMOTE	X
MFX0313	SCHUKO TO NEUTRIK® POWERCON TRUE1 - CABLE 1.5 m	
MFX0911	MAGICCFX® SMOKEJET FLIGHTCASE (FOR 4 PCS)	
MFX3106	MFX3106 HALF COUPLER (100kg) M10	
SPR00119	SAFETY STEEL 60 cm - 25 kg	

Accessories

Please contact MAGIC FX for additional possibilities.

### 1.5 FX FLUIDS

The MAGICCFX® SMOKEJET uses MAGICCFX® SMOKEJET FLUID to create the smoke effect. The fluid is delivered in a can. Do not use other fluids than those that are approved and supplied by MAGIC FX, see following table.

Code	Type of fluid	Volume
MFX3070	MAGICCFX® SMOKEJET FLUID	5 litre

Approved FX Fluids

## 2 OPERATE SAFELY!

### **⚠ WARNING**

Please read the following safety information carefully before operating the machine. Information includes important safety information about installation, usage, and maintenance. Pay attention to all warning labels and instructions in this manual and printed on the machine.

If you have questions about how to operate the machine safely, please contact your local MAGIC FX dealer for help.

### 2.1 GENERAL SAFETY RULES

- Keep this device dry.
- Always connect to a grounded circuit to avoid risk of electrocution.
- Before connecting machine to power, always check voltage indicate on machine match to your local AC voltage. Do not use the machine if AC power voltage does not match.
- Disconnect the machine from AC power before servicing and when not in use.
- This product is for indoor use only! Do not expose to rain or moisture. If fluid is spilled, disconnect AC power and clean with a damp cloth. If fluid is spilled onto electronic parts, immediately unplug the machine and contact your local MAGIC FX dealer for advice.
- No user serviceable and modifiable parts inside. Never try to repair this product, unauthorized technician may lead machine to damage or malfunction.
- For adult use only. Never leave the machine running unattended.
- Installed in well ventilated area. Provide at least 50 cm space around the machine.
- Never add flammable liquid of any kind to the machine.
- Make sure there are no flammable materials close to the machine while operating.
- Only use MAGIC FX fluid. Other fluid may lead to heater clog and malfunction.
- If the machine fails to work, unplug the machine and stop operation immediately. Contact your local MAGIC FX dealer for advise.
- Before transporting the machine, make sure the fluid tank is completely drained.
- Smoke fluid may present health risks if swallowed. Do not drink smoke fluid. Store it securely. In case of eye contact or if fluid is swallowed immediately look for medical advice.



## 2.2 RIGGING

Please follow the European and national guidelines for safe rigging and trussing.

## 2.3 SAFETY SYMBOLS

Symbol

Meaning



Read the manual carefully before use!

Safety symbols

## 2.4 PRECAUTIONS FOR OPERATION

### **⚠ WARNING**

Using a damaged or an improper installed machine can lead to death, serious injury or property damage. Always inspect the machine thoroughly before operation.

### **⚠ WARNING**

Unauthorized operation of the machine can lead to death, serious injury or property damage. Never leave the machine unattended when the machine is ready for use.

### **⚠ WARNING**

Do not use the MAGICFX® SMOKEJET if alterations have been made other than by or on behalf of MAGICFX®.

### **⚠ WARNING**

Make sure there are no objects near the input grill that can block the air to be sucked in.

### **⚠ CAUTION**

Always follow the instructions as noted on the cans.

### **⚠ CAUTION**

Missing or obscured safety symbols on the machine can lead to death, serious injury or property damage. Make sure all safety symbols are correctly in place and visible, see section 2.3.

### **NOTICE**

Do not use other fluids than those that are approved and supplied by MAGIC FX, see Section 1.5.

## 3 SETTING UP

### 3.1 INSTALL THE MACHINE.

---

- 1 Place the machine on a flat surface and in a suitable large area with at least 50 cm open space around the machine.
- 

- 2 Fill the fluid tank with MAGICFX® approved fluid.
- 

- 3 Connect the machine to suitable rated power supply. To determine the power requirement for the machine refer to the label on the back of the machine.
- 

#### **⚠ WARNING**

Always connect the machine to a protected circuit and ensure it is properly grounded to avoid risk of electrocution.

---

- 4 Turn on the machine and allow it to heat up. Heat up takes approximately 5 minutes. Once the machine has reached operating temperature, the LCD display will show "Ready To Fog". Now the machine is ready for operation.
- 

- 5 To start making fog, locate the OUTPUT button on the control panel, and press the button to start making fog.
- 

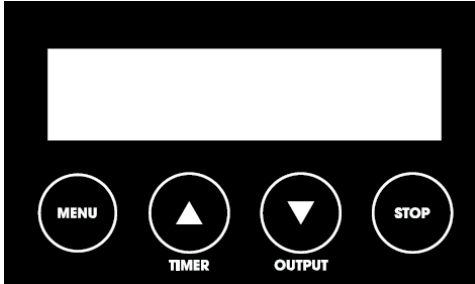
- 6 To turn off the machine, press STOP button and turn POWERCON TRUE1 to the OFF position.
-

## 4 OPERATION

### 4.1 CONTROL PANEL OPERATION.

---

The machine can be operated with the onboard digital control interface.



---

Button	Function
(MENU)	Scroll through setting menu
▲ (UP)/(TIMER)	Up/Activate Timer function
▼ (DOWN)/(OUTPUT)	Down/Activate Output function
(STOP)	Deactivate Timer/Volume function

### 4.2 CONTROL MENU.

DMX512 Address: 1	Set DMX address from 1 to 504
Stand Alone Set Master	Set machine as Master of Slave unit
Color Mode On	Turn LED On or Off
Color Mode Macro: 01	Set LED output color from macro 1 to 10
Color Mode Chase: 01	Set LED chase from 1 to 15

Timer  
Interval 15 Sec

Set interval from 15 to 360 seconds

Timer  
Duration 5 Sec

Set duration from 1 to 5 seconds

Wireless Setting  
On

Turn On or Off wireless control

Wireless Setting  
Button A:M01

Set wireless remote button function macro color 1 to 10 or chase 1 to 15 and off.

Wireless Setting  
Button B:M01

Set wireless remote button function macro color 1 to 10 or chase 1 to 15 and off.

Wireless Setting  
Button C:M01

Set wireless remote button function macro color 1 to 10 or chase 1 to 15 and off.

Wireless Setting  
Button D:M01

Set wireless remote button function macro color 1 to 10 or chase 1 to 15 and off.

LED Setting  
Fog Only

Setting for LED to turn on with fog only or always on.

LED Fade Out  
Delay: 0 Sec

Set LED delay time from 0 to 5 seconds.

Run Last Setting  
On

Turn On/Off run last setting function.

2 Second Jet Mode  
Off

Turn On/Off 2 Second Jet Mode.

W-DMX512  
Off

Wired DMX control  
Wireless DMX control

W-DMX512 OFF  
W-DMX512 ON

W-DMX Rest

Off

Reset W-DMX connection.

---

### 4.3 WIRELESS OPERATION.

Wireless remote control system consists of a transmitter equipped with four buttons to activate four user configurable LED setting and fog; with an onboard receiver attached to the rear panel of SmokeJet.

---



Remote



Wireless Receiver

---

Wireless settings are configurable through onboard control panel, refer to control menu section to setup each buttons.

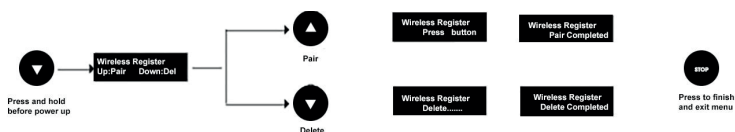
In a free open space the effective distance is 50 meters, actual usage depending on obstacle level the effective distance is 10-25 meters.

### 4.4 REGISTERING TRANSMITTER.

Transmitter can be paired or deleted from the receiver. Each receiver can pair up to 10 transmitters. Follow the steps below to pair or delete transmitter from receiver.

---

- 1 Power off SMOKEJET
- 2 Press and hold (DOWN) button
- 3 Turn power on and release (DOWN) button when LCD display blinks
- 4 Follow the menu instruction to pair or delete transmitter

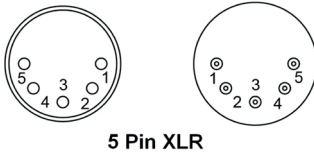


#### 4.5 TRANSMITTER BATTERY REPLACEMENT.

If the effective distance seems to be decreased, it is possible that the battery level is low and requires a replacement. In order to replace the battery, undo the three screws on the back of transmitter to release the cover. Replace with same battery-type and specification of battery which is 27A-12V.

#### 4.6 DMX CONNECTOR PIN ASSIGNMENT

The machine provides 5 pin XLR connector for DMX connection. Diagram below indicate pin assignment information.



5 Pin XLR

Pin	Function
1	Ground
2	Data-
3	Data+

## 4.7 DMX CHANNEL FUNCTION.

Channel 1	DMX Value Range	Function
Fog	0 - 4 5 - 255	Fog Off Fog On
Channel 2		
Red LED	0-255	0-100%
Channel 3		
Green LED	0-255	0-100%
Channel 4		
Blue LED	0-255	0-100%
Channel 5		
Amber LED	0-255	0-100%
Channel 6		
Chase	1-15 16-31 32-47 48-63 64-79 80-95 96-111 112-127 128-143 144-159 160-175 176-191 192-207 208-223 224-255	Chase 1 Chase 2 Chase 3 Chase 4 Chase 5 Chase 6 Chase 7 Chase 8 Chase 9 Chase 10 Chase 11 Chase 12 Chase 13 Chase 14 Chase 15
Channel 7		
Chase Speed	0-255	0-255 step per min
Channel 8		
Master Dimmer	0-255	0-100%
Channel 9		
Strobe	0-255	1-20 Hz

## 5 CLEAN UP

- Do not allow the machine to become contaminated.
- Remove dust from air vents with air compressor, vacuum or a soft brush.
- Only use a damp cloth to clean the casing.
- Before storing run distilled water through the system to help avoid condensing the pump or heater.
- It is recommended to run the machine on a monthly basis in order to achieve best performance and output condition.
- Excessive dust, liquid and dirt built up will degrade performance and cause overheating.

## 6 MAINTENANCE

To achieve the maximum service life of the MAGICFX® SMOKEJET you must regularly clean the MAGICFX® SMOKEJET and test if it is functioning correctly.

Contact MAGIC FX if the MAGICFX® SMOKEJET is not functioning correctly.

---

**⚠ DANGER**

Do not replace parts yourself; always consult MAGIC FX.

---



## 7 TROUBLESHOOTING

Always contact MAGIC FX if any malfunctions or errors occur that cannot be solved with the instructions as described in this manual.

### BREAKER RESET

Breaker  
230V = 9A 250V

---

**⚠ WARNING**

Disconnect AC power before reset breaker. Only replace fuse with same type and rating

---

- 1 Disconnect AC power
- 2 Flip breaker to ON position



- 3 Turn on machine to test
- 

### FAQ

Why does the machine not respond on any wired DMX input?  
Make sure the W-DMX512 is turned OFF.

## 8 CORRECT DISPOSAL



This symbol on the product and / or accompanying documents means that used electrical and electronic products should not be mixed with general household waste. For proper treatment, recovery and recycling, please take this product to designated collection points where it will be accepted free of charge.

Alternatively, in some countries you may be able to return your products to your local retailer upon purchase of an equivalent new product.

Disposing of this product correctly will help save valuable resources and prevent any potential negative effects on human health and the environment, which could otherwise arise from inappropriate waste handling.

Please contact your local authority for further details of your nearest designated collection point.

Penalties may be applicable for incorrect disposal of this waste, in accordance with your national legislation.

## 9 EC DECLARATION OF CONFORMITY

According to Annex III A Machinery Directive 2006/42/EC

MAGIC FX B.V. declares as manufacturer and composer of the technical construction file that the product with the following specifications:

Name machine : SMOKEJET  
Type : MFX0901  
Voltage : 230-250 Vac 50-60Hz  
Serial number : on product  
Year of construction : on product

Is in conformity with the minimal safety regulations as stated in the following directive(s):

- LVD (2014/35/EU) Low Voltage Directive
- EMC (2014/30/EC) ElectroMagnetic Compatibility
- RoHS (2011/65/EU) Restriction of the use of certain Hazardous Substances
- WEEE (2012/19/EU) Waste Electrical & Electronic Equipment

The following harmonized standards were applied:

- NEN-EN-ISO 12100:2010 Safety of machinery - General principles for design - Risk assessment and risk reduction.
- NEN-EN-IEC 60204-1:2018, Safety of machinery - Electrical equipment of machines - Part 1: General requirements.
- NEN-EN-IEC 61000-6-3:2007/A1:2011, Electromagnetic compatibility (EMC) - Part 6-3: Generic standards - Emission standard for residential, commercial and light-industrial environments.

- Original declaration of conformity  
 Translation of the original declaration of conformity

Name manufacturer : MAGIC FX BV  
Address : Schouwrooij 27, 5281 RE BOXTEL  
Country : The Netherlands

CEO : B. Veroude  
Date : 4-1-2021

Signature :



**MAG:CFX<sup>®</sup>**

[WWW.MAGICFX.EU](http://WWW.MAGICFX.EU)

